

Sustainability & Food Systems Institute Proposal

The Future of Sustainability from
URI's Students, Faculty, & Staff





Our Team




Staff & Student Team:

Dylan Murdock, Sustainability Manager
Westin Palumbo, Sustainability Researcher
Dreydan Cianci, Sustainability Project Manager

Faculty Team:

Dr. Marta Gomez-Chiarri, Professor of Aquaculture/Fisheries
Dr. Kathleen Gorman, Professor of Psychology & URI Hunger Center Director
Dr. Julie Keller, Associate Professor of Sociology & Director of Social Science
Institute for Research, Education, and Policy (SSIREP)



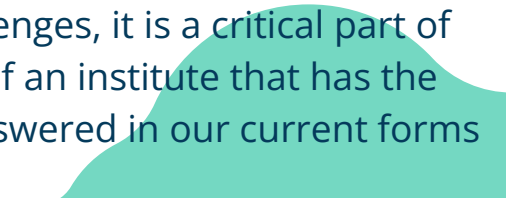
Mission Statement



“To coordinate, support, and expand existing **research, education, extension, and outreach efforts** across the University, the State of Rhode Island, and regionally to build **sustainable, equitable, just, accessible,** healthy food systems for URI, Rhode Island, and beyond.”

Motivation

As we continue to see U.S. American universities adopt sustainability initiatives to combat a growing list of environmental, social, and economic challenges, it is a critical part of URI's overall academic expansion to include the creation of an institute that has the overarching capabilities to solve issues that would go unanswered in our current forms of academia.





The Layers of a PLACE

Business professor earns Beyster Fellowship to study effect of employee ownership on corporate sustainability

KINGSTON, R.I. – Dec. 2, 2021 – Jegoo Lee, an assistant professor of management in the University of Rhode Island's College of Business, has been awarded a prestigious J. Robert Beyster Fellowship to study the effect of employee ownership on corporate sustainability practices.

The Beyster Fellowship is presented by the Institute for Study of Employee Ownership and Profit Sharing at Rutgers University's School of Management and Labor Relations. The fellowship is awarded to distinguished young scholars, providing them with support to focus on their scholarly work for a year. While the award has gone to several scholars annually in the past, it has been given to only one researcher

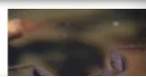
Image Credit: Beau Jones/ "The Layers of a Place" in URI News

The North Woods Project, which is organized by DWELL Lab but includes many collaborators with the URI community, was recently featured by the [College of Environment and Life Science \(CELS\)](#) and [URI News](#). Through an open-access digital resource, the North Woods Project combines augmented reality (AR), web development, and digital mapping to lay the groundwork for an ongoing research and teaching project. It aims to celebrate the North Woods through social, ecological, and creative perspectives. You can read more about the project, timeline, and collaborators on our website [here](#).

URI receives \$250,000 gift to advance sustainability efforts

The gift from the Schwab Charitable Fund, made possible through the generosity of Eric and Wendy Schmidt, will help advance sustainability practices at the University

KINGSTON, R.I.—Nov. 16, 2023—A \$247,895 charitable gift to the University of Rhode Island will support a new on-campus sustainability initiative. The gift from the Schwab Charitable Fund, made possible through the generosity of Eric and Wendy Schmidt, will launch the URI Sustainability First Initiative and will accelerate the efforts of URI students, faculty and staff to turn research and thought leadership into practical application by advancing sustainability practices across URI campuses.



Business professor earns Beyster Fellowship to study effect of employee ownership on corporate sustainability

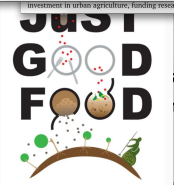


Creating Equitable, Sustainable and Resilient Food System

September – December 2022
Tuesday evenings at 7pm
Edwards Auditorium and online

Food. Though we depend on it to survive and thrive, many Americans have become increasingly disconnected from the complex systems that provide our food.

The Fall 2022 Honors Colloquium at the University of Rhode Island, "Just Good Food: Creating Equitable, Sustainable, and Resilient Food Systems," will explore ways to reconnect with our food systems through topics including: food history and culture; social-ecological impacts and planetary limits; food, race, and gender; political economy of food systems; indigenous foodways and food sovereignty; agroecology; and urban agriculture, innovation, and social entrepreneurship.



Pize Sustainability Award, for Outreach and Education, this year, recognizing its Free Farmers Market, which [started last year](#).

It's a long path from farm to table. The work started long before last year when Dr. Rebecca Brown, professor of plant sciences, and her student

ms to power hip, l to Shore'

Commit to be held Jan. 17



The green city: URI team wins \$970,000 grant to map alternative urban food networks

John Taylor and colleagues hope to identify opportunities for policymaking support

KINGSTON, R.I. – April 12, 2023 – John Taylor, associate professor of agroecology at the University of Rhode Island, has received a \$973,479 award from the National Institute of Food and Agriculture, one of 12 to receive funding through the institute's Urban, Indoor, and Other Emerging Agricultural Production Research, Education and Extension Initiative. The agency's \$9.4 million in grants are part of a broad U.S. Department of Agriculture investment in urban agriculture, funding research



John Taylor, associate professor of agroecology at URI, has received a \$973,479 award from the National Institute of Food and Agriculture, part of a broad investment in urban agriculture, funding research

University of Rhode Island to host 2022 food summit focused on innovation, sustainability, partnerships

Sixth Annual Rhode Island Food System Summit to be held Jan. 20

KINGSTON, R.I. – Jan. 13, 2022 – As the United States enters year three of the COVID-19 pandemic, one major takeaway has been how the pandemic revealed cracks in the nation's food system infrastructure. While disruptions in the supply chain reverberated across the country, in New England where approximately 90% of the food consumed is produced elsewhere, there is much less room for error. On **Thurs., Jan. 20, at 9 a.m.**, the University of Rhode Island will host its sixth annual Rhode Island Food System Summit, "[Dividing Food Innovation Through Sustainable Partnerships](#)," to discuss how, as a state, we can work to make our food system more sustainable, more accessible and more resilient. The summit will focus on how Rhode Island can leverage agricultural advancements, state-of-the-art facilities, partnerships



Some of the team behind URI's Free Farmers Market on the Quad (l-r): Aaron Fitzgery, Will Kist, Amanda Misener, Rebecca Brown and Pierre St-Germain. URI Photo by Nora Lewis

PPL : Rhode Island Energy, PPL company, partnering to propel research on renewable energy, energy alternatives, sustainability

June 03, 2024 at 03:02 pm EDT

KINGSTON, RI, and PROVIDENCE, RI (June 3, 2024) - University of Rhode Island President Marc Parlange and Greg Cornett, president of Rhode Island Energy, Friday announced a strategic partnership that will propel important research in renewable energy, energy alternatives, and sustainability. The partnership brings together researchers at URI and the PPL Corporation, a Pennsylvania-based energy company composed of Rhode Island Energy, LG&E, Kentucky Utilities, and PPL Electric Utilities, which serves 3.5 million customers in four states.

INNOVATOR Q&A

From trash to textiles: URI professor promotes sustainability in the Ocean State

Izabela Ciesielska-Wrobel focuses on refurbishing ocean waste, and she's pushing lawmakers to require filters in washing machines to prevent microfibers from

GSO professor and Fulbright Specialist collaborates with NGO in Mauritius on coastal sustainability

KINGSTON, R.I., – Oct. 31, 2023 – J.B. Walsh, director of the University of Rhode Island's Coastal Resources Center and professor at the Graduate School of Oceanography, recently traveled to Mauritius, an island country located 500 miles east of Madagascar, as part of the Fulbright Specialist



J.B. Walsh and leaders from MRU 2023 met with the U.S. Ambassador to Mauritius, Henry Jarboe, and his team (left to right) U.S. Embassy's operations head, MRU's Carla Gronander, J.B. Walsh, Ambassador Henry Jarboe and MRU's Yan Hoeksma.

project in government section, Mauritius's coastal

Wins URI



chool of Oceanography to host Science Saturday on Sept. 7.

More than two dozen free interactive exhibits and behind-the-scenes tours await guests on the Narragansett Bay Campus

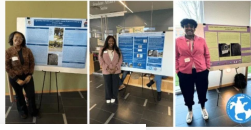
KINGSTON, R.I. – Aug. 28, 2024 – All are invited to a family-friendly day on Saturday, Sept. 7, at the University of Rhode Island's Narragansett Bay Campus, home to the [Graduate School of Oceanography](#), Department of Ocean Engineering, and numerous other organizations, which together create a world-renowned community of coastal and ocean scientists, engineers, managers, policy experts and educators.



On Sept. 7, enjoy a free, family-friendly day at the School of Oceanography (top) taking in the latest in coastal and ocean exploration, discovery and science.

Call for applicants! 2024 Undergraduate Summer Fellows

DWELL is participating in URI's 2024 Summer Undergraduate Research Fellowship (SURF) program and we're seeking undergraduate students interested in science communication, digital media, augmented reality, and/or community-based research. Read more at <http://tinyurl.com/DWELApply>



Facebook, Twitter, and other social media icons.



Free Farmers Market for students opens Thurs, Sept. 5 this year. The first fresh and free produce for URI students every Thursday through (URI Photos / Nora Lewis)

Share X Facebook



115+ Professors

Already incorporating sustainability into their teaching and research

50+ Programs & Labs

That provide learning opportunities for students in green initiatives, including undergraduate minors, graduate certificates, and doctoral pathways

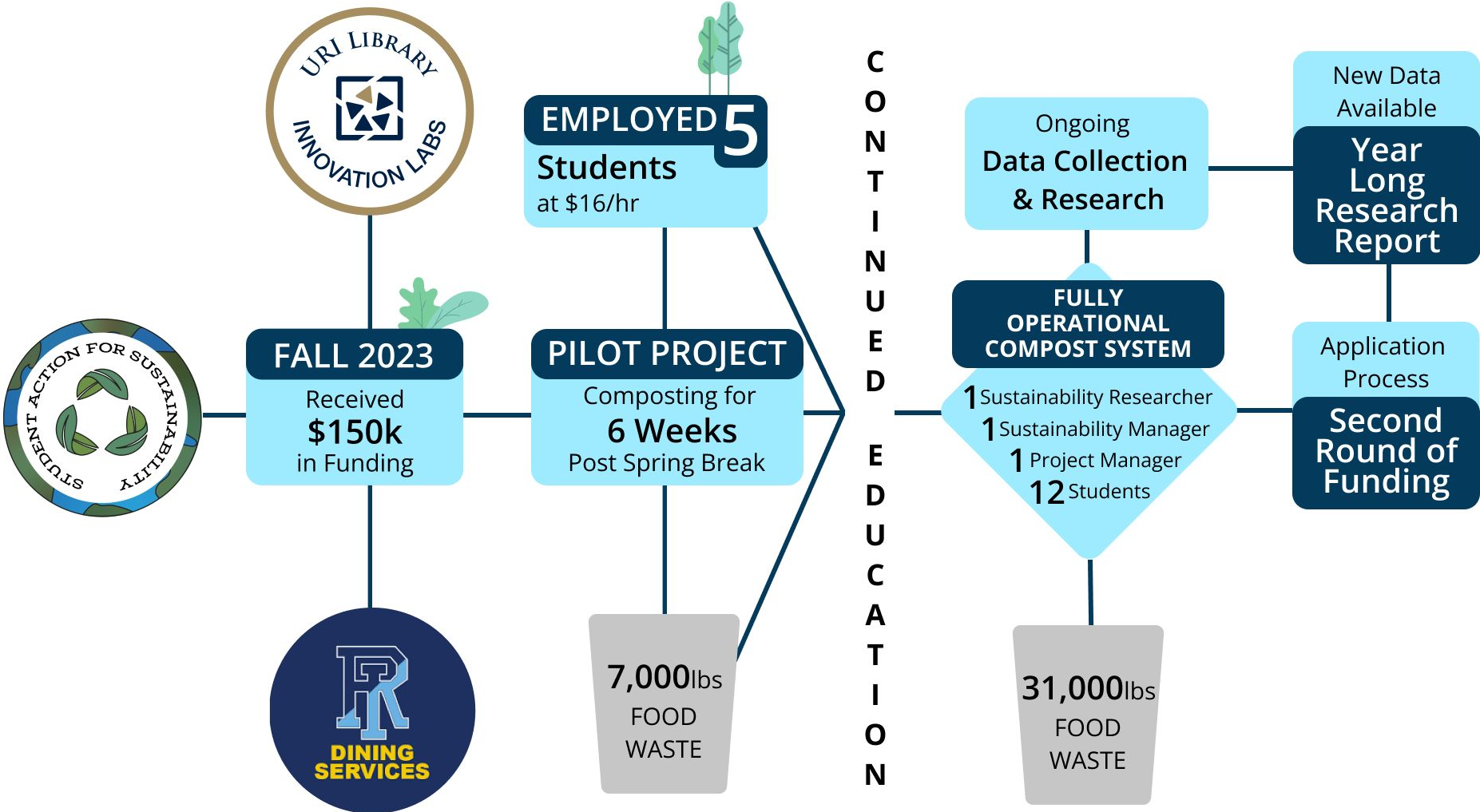


Faculty Impact

Action

For Students, By Students





INITIAL INNOVATORS

- Dining Services

- Facilities

- Honors Department

- Library Innovation Labs

- Engineers for a Sustainable World (ESW)

- Rhody Outpost with Barbara Sweeney

- Student Action for Sustainability (SAS)

CURRENT COLLABORATORS

- Office of National Fellowships & Academic Opportunities (ONFAO)

- Professional and Public Writing

- Philosophy

- Nutrition

- Journalism •Sociology

- History •Boots to Bushels

- Free Farmers Market

- DWELL Lab

- Plant Sciences & Entomology

- Sustainable Agriculture & Food Systems

- Sustainability Suppers with Mary Parlange

- Food Recovery for Rhode Island

FUTURE PARTNERS

- Rhode Island Compost Conference and Trade Show

- Johnson & Wales Wildcat Food Rescue Program

- JSC

- RI Food System Summit

- Brown University

- American University

- Rhode Island Food Policy Council

- RI School Recycling Project

CORE SUSTAINABILITY TEAM



The Steps Forward



Audit of URI Sustainability Efforts

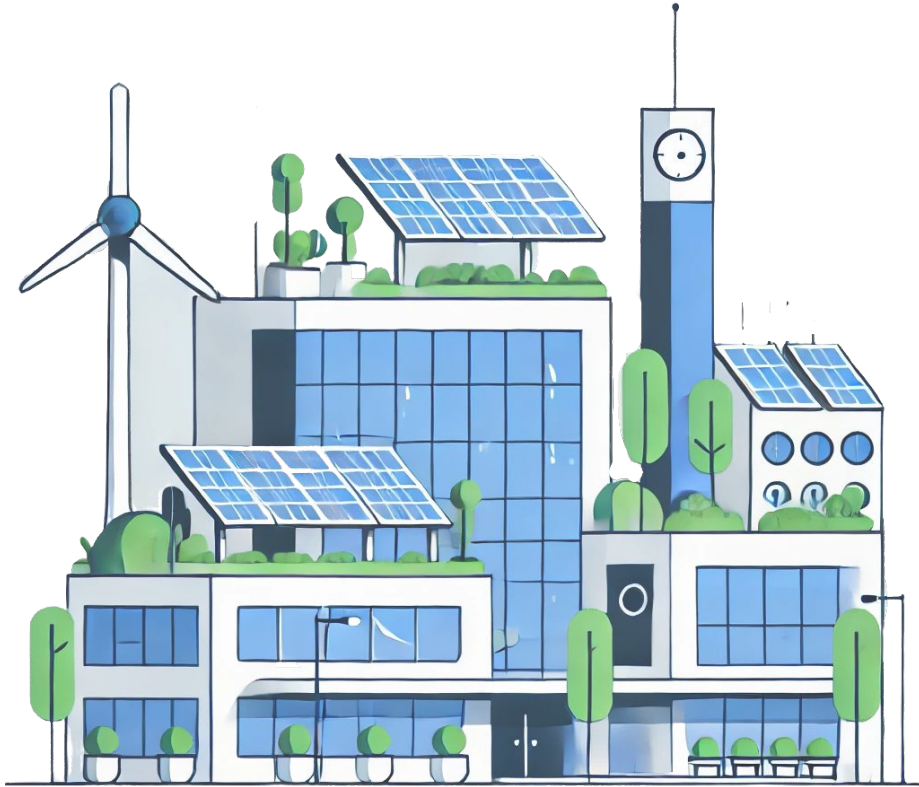
Short-term assessment to know
where URI stands now

Sustainability & Food Systems Institute Proposal

Long-term future for greener initiatives
at our university



Step I: Audit of URI Efforts Towards a Greener Tomorrow



Application of a STARS Report for URI

The industry standard of sustainability frameworks in higher education

Sustainability Project Database

Collection of all student, staff, & faculty projects and initiatives

Further Funding Opportunities

This information can be used to support a proposal for a second round of funding from the 11th Hour Project

Step II: Faculty Proposal Support


- Faculty team with years of experiences in research and community outreach who are already leading academic programs in these fields
 - URI Feinstein Center for a Hunger Free America
 - Social Science Institute for Research, Education, and Policy (SSIREP)
- Proposal brings all campus sustainability efforts into one place, regardless of department or status as student, staff, or faculty
- Improves coordination and communication of efforts to avoid repetition

THE
UNIVERSITY
OF RHODE ISLAND
SOCIAL SCIENCE
INSTITUTE FOR
RESEARCH, EDUCATION,
AND POLICY



FOOD INSECURITY ON CAMPUS
A UNIVERSITY OF RHODE ISLAND CASE STUDY

Pierre Collins, BA
Kathleen Gorman, Ph.D.



Core Priorities

PRIORITY

01

Building Upon URI's Land-Grant Roots

PRIORITY

02

Enhance Student Achievement

PRIORITY

03

Expand & Develop Sustainable Food
Systems & DEI Standards

PRIORITY

04

Convene All Efforts into One Institute



All priorities are built off of URI's Strategic Goals

PRIORITY

01

Building Upon URI's Land-Grant Roots

Broaden URI's impact
by revitalizing our
commitment to
land and
sea-grant
missions

Position URI as a
vital partner and
dynamic leader
in solutions-based
societal change



PRIORITY

02

Enhance Student Achievement

Offer **paid opportunities** for students inside and outside the classroom so they can build themselves up while improving their communities

Build a college-wide **community that fosters innovation and passion** within sustainability initiatives

Improve student life through the **creation of new student experiences**, such as access to research and international opportunities



PRIORITY

03

Expand & Develop
Sustainable Food
Systems & DEI
Standards

Establish and grow strategic goals for implementing **environmentally-focused systems and research**

Build **sustainable, equitable, just, accessible, and healthy** food systems for URI, Rhode Island, and beyond



PRIORITY

04

Convene All Efforts
into One Institute

Consolidate financial mechanisms and resource accessibility at URI for **research, education, extension, and outreach on sustainability and food systems**

Structure the **Sustainability & Food Systems Institute** into a high-performing and fiscally sound organization with the physical facilities necessary to achieve its strategic vision



Short-Term Goals

- Conduct a full audit of the sustainability efforts happening at URI within the students, faculty, & staff
- Be a joint appointment with the Provost's office to ensure **all** projects are accounted for
- Create a final report for the end of the 2024/2025 school year

**Hire Sustainability
Coordinator**

- Support Faculty Team's submission to the Faculty Senate
- Will be proposed in late September
- The opportunity to provide further resources and attention to faculty efforts

**Faculty Senate
Proposal Submission**


- Collaborate with various departments across the university to exhibit sustainability-focused projects for the URI community
- Will be held at the end of the 2024/2025 academic year
- Partnership with Mary Parlange

**Host Sustainability
Summit**

Long-Term Goals



Launch Sustainability Institute

- Mark the creation of a long-standing location where all community members can hear about past, ongoing, and future projects and receive support for their own
 - Become a hub for sustainability-focused student organizations and community members interested in making an environmental difference
- 

Hire Sustainability Director

- Create a interdisciplinary position that can communicate with all levels of university initiatives
- Bring together people from across the university to build and expand environmentally-focused efforts
- Make sustainability a core focus of the university

Thank you!

